

## Photocontrol - Select Grade Locking Type Electronic Photocontrol, 8-Year Warranty

Item EK4536



### PRODUCT DESCRIPTION

Designed to meet a 15-year service life, this photocontrol is LED-compatible and backed by an 8-year warranty.

### FEATURES

- ▶ Non-drift silicon light sensor with IR filter
- ▶ DC relay with zero-crossing circuitry for extended life
- ▶ All components meet 15-year life expectancy
- ▶ Conformal coated PCB
- ▶ Exceeds 10,000 ON/OFF switching cycles
- ▶ Ideal for single or multifixture HID and LED installations (up to 1,650 W @ 277 VAC)
- ▶ 510 J MOV surge protection

### APPLICATIONS

- ▶ Exterior Lighting
- ▶ Street Lighting
- ▶ Parking Lot
- ▶ Pedestrian Pathway Lighting
- ▶ Landscape Lighting

### TECHNICAL DATA

#### General

Model Number	EK4536
Description	Select Grade Locking Type Electronic Photocontrol, 8-Year Warranty
UPC Code	078275130173
Brand	Intermatic
Country of Origin (Intermatic)	MEXICO
Warranty	8-Year limited
Usage Environments	Outdoor
Photocontrol Type	Electronic
Expected Lifetime (Years)	15
Expected Lifetime (Operations)	10000
Application Compatibilities	LED; Incandescent; HID
Photocontrol Style	Locking type
Photocontrol Sensor Location	Side

#### Control Specifications

Sensor Time Delay	Instant ON; 2 sec to 5 sec OFF
Photocell Type	Silicon Diode
Photo Control Switch Type	Relay
Fail Mode	ON
Activation On	1.5 fc
Activation Off	2.25 fc

#### Dimensions

Product Diameter (in)	3.375
Product Diameter (mm)	85.8

**Material Specifications**

Cover Color	White with Blue Band
Housing Material	Polypropylene

**Load Ratings**

Magnetic Ballast Range(s)	1800 VA
Tungsten Range(s)	1000 W
Electronic Ballast Range(s)	6 A, 120-277 VAC, 50/60 Hz

**Electrical Specifications**

Surge Protection	510 J MOV
------------------	-----------

**Packaging**

Shipping Weight (lbs)	0.25
Unit Carton Height (in)	3.375

**Environmental Specifications**

Temperature (operation)	-40°C..70°C
-------------------------	-------------

**Standards and Certifications**

UL Certification	cULus
Other Certifications and Compatibilities	CA Title 20; Ansi C136.10
California Proposition 65	None
RoHS Certification	Yes

## ACCESSORIES



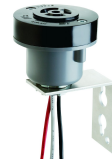
K4500  
Shorting Plug, Rating: 15 A, 480 VAC Max



K121  
ANSI C136.10 Locking Type NEMA Receptacle, (9" lead), gasket included



K121-30  
ANSI C136.10 Locking Type NEMA Receptacle, (30" lead), gasket included



K122  
ANSI C136.10 Sealed Locking Type NEMA Receptacle, (14" lead), with Pole Bracket



K171H  
ANSI C136.41 7-Pin Locking type Receptacle (12" Lead)



KPT0170-010  
Power Tap Adapter for Streetlights with Locking Type Photocontrols



KPT1170-010  
Power Tap Adapter for Streetlights with Locking Type Photocontrols